



INDONESIA

GONE WILD

Indonesia Focus: June, 2011 Edition
Worldwide distribution through VITO
(Visit Indonesia Tourism Officers)





Indonesia is a 'mega-diversity' country that makes it biologically one of the richest countries in the world. This is because of its extraordinary wealth of diversity among the flora and fauna. Indonesia's moderate climate throughout the year, its fertile soil brought about by lava, and its minerals found on land and the sea caused by volcanic eruptions, have made this ideal habitat for a large number of unique and endemic flora and fauna.

The incredible endemic species in each island in Indonesia and the myriad of niches that exist within the diverse and complex vegetation types are found as the treasures of Indonesia. Indonesia is the home for over 30,000 recorded species of plants and over 3000 mammals, birds, reptiles and amphibians.

The wealth of Indonesia fauna are proven by the large percentages of fauna lived in Indonesia. Indonesia holds 12 percent of the world's mammal species, 16 percent of its reptile and amphibian species, and 17 percent of the world's bird species. Not only are these percentages impressive, but many of the species concerned are endemic—that is, they are found here and nowhere else. This applies to about 430 of the country's 1,500 birds and 200 of its 500 mammal species.



Another fascinating fact about Indonesia's flora and fauna is the fact that it is divided by the so-called "Wallace Line" that runs between Bali, Lombok, continuing north between Kalimantan and Sulawesi. This is named after Alfred Wallace, the famous 19th century explorer and naturalist who discovered the fact that





geographically there is a distinct difference between flora and fauna to the West of the line and the East of the line that more resembles Australia.

If you wish to experience the fascination of natural Indonesia, there are as many choices as there are islands in this paradise archipelago – over 17,000! In this edition, Indonesia Focus will highlight examples of magnificent wildlife in Indonesia, such as: the Komodo Dragon, Orangutans, Elephants, Rhinoceros, Tigers, *Tarsius*—the world’s smallest monkey, *Bekantan*—unique big-nose monkey species, *Jalak Bali* the Bali Starling, *Cendrawasih* the Bird of Paradise, Hornbills, Cassowaries, and all the places where to find this magnificent wildlife throughout Indonesia. Let the adventure begins!





Komodo Dragon



The Komodo's habitat is in Komodo National Park, lies in the Wallacea Region of Indonesia, identified by WWF (World Wildlife Federation) and Conservation International as a global conservation priority area. The park is also one of the nominees of the new Seven Wonder of Nature. The Park is located between the islands of Sumbawa and Flores at the border of the Nusa Tenggara Timur (NTT) and Nusa Tenggara Barat (NTP) provinces.

It includes three major islands, Komodo, Rinca and Padar, and numerous smaller islands together totaling 603 km² of land. The total size of Komodo National Park is presently 1,817 km². Proposed extensions of 25 km² of land (Banta Island) and 479 km² of marine waters would bring the total surface area up to 2,321 km². Beside Komodo Dragons, people visit the park because of its superb beaches and unspoiled coral reefs.

Guides are required by regulations for all hiking and sightseeing, as a handful of unwary walkers have been caught off guard by the speed and power of the Komodo dragons. The only way to get around is on foot, since there are neither roads nor motor transport.

Getting there

- ❖ Most visitors enter Komodo through the gateway cities of Labuan Bajo in the west of Flores or Bima in eastern Sumbawa, only a 2 hour flight from the departure point for the trip being Denpasar, Bali.





- ❖ There is a daily flight from Denpasar to Labuhan Bajo. The gateway cities of Labuan Bajo and Bima are also connected to Denpasar, Bali by overland buses.
- ❖ By Sea (ferry), the travel time is approximately 36 hours.
- ❖ Labuan Bajo and Bima are also connected to Denpasar, Bali by inter-island ferry.
- ❖ Contact the Indonesia Sea Transportation Company (PELNI) to reserve a seat on the KM. Tilong Kabila, which departs Benoa Port, Bali bound for Bima and Labuan Bajo.
- ❖ Komodo also has available a wide range of live-aboard boats, with return packages to Komodo National Park from a variety of departure points, including Bali, Lombok, Bima and Labuan Bajo
- ❖ From Labuhan Bajo to Komodo, you can easily organize a shared boat charter by local boat from either ports at Labuan Bajo or Bima (Sape) to the two major points of access in the Park: Loh Liang (on Komodo Island) or Loh Buaya (on Rinca Island)



A paradise in Komodo Island





Orangutans



The largest living arboreal animal, the Orangutan have longer arms than the other, more terrestrial great apes. Orangutans are among the most intelligent primates and use a variety of sophisticated tools, and also make sleeping nests each night from branches and foliage. Their hair is typically reddish-brown, instead of the brown or black hair found in other great apes.

Bukit Lawang

Located in Leuser National Park, Bukit Lawang is the place if you would like to do jungle trekking to see Orangutans in their original habitat. Seeing the Orangutan in the wild is one of the best experiences you will ever have. It is not permitted to go unaccompanied into the jungle and there are plenty of good and reliable guides of the national park. These will show you the best jungle trek routes to see the Orangutan, explain their habitat and behavior, and advise you what to do and not do. Bohorok: An orangutan rehabilitation centre; ecotourism activities like kayaking/canoeing, camping, and bird watching. Ketambe and Suak Belimbing: suitable place for research on primates and other animals; research facilities include accommodation and a library.

Getting to Bukit Lawang

From Medan use a car or a bus to get to Bukit Lawang. Buses depart frequently from Pinang Baris bus terminals (located at Jalan Gatot Subroto). The trip takes around 3 hours. If you are traveling in a group or want something more convenient





instead of the public bus, you can rent a car with arranged trips through most of the main tourist destinations.



Tanjung Puting National Park

UNESCO has declared Tanjung Puting National Park as a Biosphere Reserve. This Park was the first place in Indonesia to become a rehabilitation centre for orangutans. There are now three orangutan rehabilitation locations, Tanjung Harapan, Pondok Tanggui, and Camp Leakey. The orangutans of Kalimantan has dark reddish fur and no tail. As they get older, the adult males cheeks flesh out, resembling cushions. The older they get, the bigger these cheek flanges grow, giving them a fierce look.

- ❖ Tanjung Harapan: this is the first station in the orangutan rehabilitation process. Situated in the midst of secondary forest and swamp forest, it has a guesthouse, an information centre, and trails.
- ❖ Pondok Tanggui: orangutans that have passed the semi-wild phase are moved to Pondok Tanggui. There, they are closely monitored from a distance, and human contact is avoided.
- ❖ Camp Leakey: founded in 1971 in the middle of primary forest, this is the location for semi-wild and wild orangutans, and for younger orangutans from birth until three years of age.

Getting to Tanjung Puting

- There is straight flight from Jakarta to Pungkalan Bun (or Banjarmasin en route to Pungkalan Bun). Or Jakarta-Semarang-Pangkalan Bun by plane, or from Semarang to Pangkalan Bun by ship.





- ❖ Then, Pangkalan Bun-Kumai by car (8 km)
 - Kumai-Tanjung Harapan by motorized longboat, 1.5-2 hours, fast motor boat, 0.5-1 hour
 - Kumai-Camp Leakey, 1.5-2 hours
- ❖ Or you could take the bus from Banjarmasin to Pangkalan Bun, transit at Palangkaraya and Sampit. Warning: It takes 18 hours ride over really bad roads.
- ❖ Route: Jakarta/Semarang-Pangkalan Bun-Kumai-Tanjung Harapan/Camp Leakey





Rhinoceros:

Javan Rhino

The Javan rhinoceros ("rhino") weighs 1500 - 2000 kg (3200 - 4400 lb) and has a length of 3 - 3.5 m (10 - 11'). It has one horn and prominent folds in the skin. The horn grows onto a roughened area of the skull (rather than being "rooted" in the skull). The species is now critically endangered, with only two known populations in the wild, and none in zoos. The main factor in the continued decline of the Javan Rhinoceros population has been poaching for horns, as they are believed to have healing and aphrodisiacal properties in traditional Chinese medicine.



This rhino is possibly the rarest large mammal on earth. The Javan Rhinoceros is a solitary animal with the exception of breeding pairs and mothers with calves. It can live approximately 30–45 years in the wild. It historically inhabited lowland rain forest, wet grasslands and large floodplains. A population of as few as 40 live in Ujung Kulon National Park on the island of Java in Indonesia. Ujung Kulon National Park forms the largest remaining lowland tropical rain forest ecosystem in West Java, the ideal habitat of Javan Rhino.

Getting there

Jakarta-Pandeglang (via toll road)-Labuan, about 3 hours by car (153 km); or Bogor-Pandeglang-Labuan, about 3 hours (160 km); then Labuan-Tamanjaya via Sumur, about 3.5 hours by car; or Labuan-Pulau Peucang, about 5 hours by speed boat.





Sumatran Rhino

The two-horned Sumatran rhinoceros shares the bleak distinction of world's most endangered rhino with its regional cousin, the Javan rhino. Listed as critically endangered, there are thought to be fewer than 400 Sumatran rhinos in existence today. While a number of these animals are kept in zoos, they rarely breed in captivity. The leathery hide is gray-brown in colour, and is folded into armour-like plates.

Unique among rhinos, the Sumatran rhinoceros is covered with a conspicuous coat of coarse, reddish brown hair. Two horns are found on the nose in both sexes, with the front horn growing larger than the rear. Males' horns usually larger than those in females. The upper lip is hooked and prehensile. The body is relatively short and stocky, and the pillar-like legs are short. As the smallest rhino, they weigh about 1,760 pounds (800 kilograms), and grow to a height near 5 feet (1.5 meters) at the shoulders and 8 to 10 feet (2.5 to 3.2 meters) in length. In the wild, it can be found in Bukit Barisan Selatan National Park, Gunung Leuser National Park, Kerinci Seblat National Park, and Way Kambas National Park on Sumatra





Elephants



The Sumatran Elephant (*Elephas maximus sumatranus*) is one of three recognized subspecies of the Asian Elephant, and is native to Sumatra island of Indonesia. Since 1986, *Elephas maximus* has been listed as endangered species. A population survey conducted in 2000 estimated that only 2000 – 2700 wild elephants remain. In general, Asian elephants are smaller

than African elephants and have the highest body point on the head. The tip of their trunk has one finger-like process. Their back is convex or level. Females are usually smaller than males, and have short or no tusks. Sumatran elephants can be found in Way Kambas National Park, located on Lampung Province. Karangsari Elephant Training Center: the first elephant training centers in Indonesia, located in Way Kambas

Getting there

- ❖ Bandar Lampung-Metro-Way Jepara, about 2 hours by car (112 km)
- ❖ Branti-Metro-Way Jepara, about 1.5 hours (100 km) by car
- ❖ Bakauheni-Panjang-Sribawono-Labuan Meringgai-Way Kambas, about 2 hours by car





Tarsius Monkey

Tarsius Spectrum, simply known as “Tarsius Monkey”, is the smallest monkey in the world! Measuring a staggering five inches (12 cms) and weigh only 120 grams can only be seen at night. Another interesting fact about Tarsius is the special adaptation in its neck vertebrae to help it turn its head 180 degrees. It to do so because Tarsius’s eyes cannot move independently.

Tarsius lived in primary and secondary forest, coastal forests and mangrove forest. In Indonesia it can be found in Sulawesi. It’s also preserve in Tangkoko National Park, in North Sulawesi.



Tarsius--courtesy of iStockphoto

Getting there

- ❖ The Tangkoko National Park is easily access from Manado
- ❖ Manado (North Sulawesi) is an accessible capital city, reachable via international flights from Singapore or Malaysia (Kuala Lumpur), Philippines (Davao) and domestic daily flights from Jakarta, Surabaya, Balikpapan and Bali. Daily Domestic Flight from Jakarta, Surabaya, Bali and Balikpapan are also available.
- ❖ The Ships to Manado is only from Indonesian islands. PELNI has six large passenger boats calling at the deep-water port of Bitung, plus there are many smaller ferries out of Manado itself. They call at ports along the coast, go north to Tahuna (Sangihe) and Lirung (Talaud) or over to Ternate and Ambon. PT





PELNI passenger ships will take you to Bitung Harbor, about 45 km from Manado.

- ❖ Information about ferry schedules of the Indonesian Shipping Agency PELNI please click www.pelni.co.id. Besides Bitung harbour, there are smaller harbours like Manado, Amurang, Likupang, Tanawangko and Belang served by smaller ships with shorter routes.
- ❖ The Trans-Sulawesi Road stretches all the way from Manado in the north to Makassar in the south of Sulawesi. But this is not recommended for you cause from Palu or South Sulawesi will take several days to Manado, long way to go.
- ❖ From Manado it takes around 2 hours and 30 minutes to Tangkoko, about 70 kilometers.
- ❖ The newly laid roads allow easy accessibility by passenger cars and vans.





Bekantan

The Proboscis Monkey (*Nasalis Larvatus*) is known as Bekantan in Indonesia. Bekantan is a unique monkey most associated with an enormous nose on the male. The big nose is thought to be used in mating and is a characteristic of the males. The nose can reach up 7 inches in length. The female also has a big nose, but it isn't as big as the male's. Besides attracting mates, the nose serves as resonating chamber and works to amplify their warning calls. When the animal become agitated its nose swells with blood, making warning calls louder and more intense.



The Bekantan males are much larger than females, weighing up to 24 kg and reaching 72 cm in length with a tail of up to 75 cm in length. Female are up to 60 cm long, weighing up to 12 kg. In Indonesia, Bekantan can be found in Kalimantan. But it can also easily found in Taman Safari Prigen, a Safari Park in East Java.

Taman Safari Prigen has developed on site conservation for the Bekantan. In December 2010, a new baby Bekantan was born in Taman Safari Prigen. This baby Bekantan was the 24th Bekantan that lived there.

Getting to Taman Safari Prigen:

Taman Safari II Prigen is located in the highway between Surabaya and Malang, East Java. It's just 1,5 hours driving by car from Juanda International Airport in Surabaya. If drive to Taman Safari II Prigen from Malang, it's just 45 km or 1 hour by car.

Challenge yourself to use the public transportation to Taman Safari II Prigen! It's very easy though, all you need to do just take a bus and stop at the





Giant Ivory Gate Sukorejo then continue by Ojek (hired motorcycle) to reach Taman Safari II Prigen in 10 minutes.

For more information about Taman Safari II Prigen:

Taman Safari Indonesia

Unit II Prigen, Pasuruan—East Java

www.tamansafari2.com

email: marketing@tamansafari2.net





Tiger

The Sumatran tiger is found only on the Indonesian island of Sumatra. It is the smallest of the tiger subspecies as compared to the Siberian tiger which is the largest. Sumatran male tigers average 8 feet in length (2.4 meters) from head to tail and weigh about 265 pounds (120 kilograms).



Females average 7 feet in length (2.2 meters) and weigh about 200 pounds (90 kilograms). The smaller size of the Sumatran tiger makes it easier to move quickly through the jungle. Also, their stripes are narrower than other tiger species. The tiger's patterned coloring is an adaptation for camouflage in their natural habitat, which is often tall grass. The males have a more bearded and maned appearance. Webbing between their toes, when spread, enables the Sumatran tiger to be very fast swimmer. They will, if given the chance, run hoofed prey into the water who are much slower swimmers. The white spots on the back of tiger's ears are called "eye spots" or "predator spots". These spots are believed to function as false eyes as well as to make it look larger to any predator approaching from behind. This is particularly helpful in keeping cubs safe.

The habitat of Sumatran Tiger is in Mt. Leuser National Park in the northern part of Sumatera.

Getting there

- ❖ Buses from Medan, Pinang Baris Bus Terminal to Bukit Lawang, 86 km by road to the north-west
- ❖ There are many drivers offering minivans from the Belawan ferry terminal direct to Bukit Lawang. Expect to change minivans at least once (in Medan).
- ❖ Another option is hire a rental car, with or without driver.





Bird Watching:

Cassowary

There are studies who believe that the ancestor of the Cassowary was able to fly. But the truth about this matter is still debatable. Today Cassowaries are known as magnificent giant and flightless birds. At four years old, Cassowaries' height could reach more than 1.7 meters, and the female Cassowaries are usually larger and higher than the male. The magnificent postures of Cassowaries marked the beauty of these birds.

All the species of Cassowaries have horn-like but soft and spongy crest called a *casque* on their heads, up to 18 cm or 7 inches. Like other birds, the Cassowary does possess wings but due to its small size the Cassowary isn't able to fly. All

Cassowaries have feathers that consist of a shaft and loose barbules. And the feathers of female Cassowaries are usually more colorful than the male. The magnificent of Cassowaries is also unique in its living

to a great age for birds - the Cassowary is likely to reach 20 years old. A Cassowary is recorded to have lived 39 years in modern times.

There are three species of Cassowaries: *Casuarius Casuarius*, *Casuarius Benetti*, *Casuarius Unnpendiculatus*. The *Casuarius Casuarius* is the best known



Cassowary the Dangerously Beautiful Bird—courtesy of iStockphoto





of the Cassowaries and was first brought to Europe by Dutch trader in 1597. The first Cassowaries were called the “Ceram Cassowaries” due to it were taken from Ceram Island in Maluku. This Cassowary also known as the double-wattled or two wattled or twin wattled Cassowary because the appearance of a pair of pendulous fleshy wattles.

The double-wattled Cassowary’s height could reach 1.7 meters in normal walking postures but easily reaches 1.6 to 1.9 meters when the bird assumes an upright stance if surprised, aggrieved or in mating display. The *Casuarius Unappendiculatus* is slightly larger than the double-wattled Cassowary. They could reach about 1.5 to 1.8 meters in normal walking postures and reaches more than 1.8 meters in special case. Today the *Casuarius Unappendiculatus* or the single wattled Cassowary is the most endangered Cassowaries.

The smallest Cassowary is the *Casuarius Benetti* that also known as the dwarf Cassowary. This Cassowary’s height only reaches 1.0 to 1.4 meters high, quite small compared to the other species of Cassowary. The dwarf Cassowary also the only Cassowary without wattles, but they do have a red or purplish round spot where the wattles join the neck in the other Cassowaries.

Where to Find the Cassowary?

This magnificent bird is an endemic bird in Papua, Seram Island and Aru Island in Maluku. Today it’s getting easier to see the beauty of Cassowary. All you need to do just step into Taman Burung dan Taman Anggrek (Bird Park and Orchid Park) in Biak, Papua. The Bird Park and Orchid Park is the nature conservation for flora and fauna endemic in Papua, including Cassowaries and Cendrawasih the bird of paradise.

To reach Taman Burung and Taman Anggrek Biak is easy. The first thing to do is to get to Biak and Garuda Indonesia, the national carrier, has seven flights a week to Biak from Jakarta.

Once in Biak, it is no problem to rent a car or taking the public transportation such as bus and taxi to the Bird Park and Orchid Park that is located on the south part of the Island. Our advice is to visit this nature conservation in the morning because the nature conservation closes at noon. This nature conservation opens at 07.30 am and closes at 14.00 pm.





Cendrawasih, Birds of Paradise

Cendrawasih or Birds of Paradise are considered by many to be the most beautiful birds on earth. Birds of Paradise are one of the most resplendent and ornate families of birds. Some of their scientific name describe them as being “from paradise”, “superb”, “magnificent”, and “most splendid”. The beauty of these birds are simply could not have been expressed any better.

Birds of Paradise are a very diverse group comprising some of the world’s most beautiful birds that can be found in Australia, Papua New Guinea, and Indonesia. Papua is the home for 28 species of these wonderful birds including: The Long Tailed Paradigalla or *Paradigalla Carunculata*, The Arfak Astrapia or *Astrapia Higma*, Western Parotia or *Parotia Sefilata*, Wilson’s Bird of Paradise or *Cicinurus Respublica*, and The Red Bird of paradise or *Paradisaea Rubra*. Cendrawasih live in the tops of trees and in the under bush, making nest in the tree’s branches and holes.



The beauties of Cendrawasih are expressed in their appearance, their magnificent feather and their shapes are the reflection of paradise. A male’s plumage is designed to impress, being adorned with ornaments that include iridescent feathers, long tails straps, and all sorts of modified curled and curved feathers. They are use in extraordinary courtship display in which the male tries to demonstrate as much of its beauty as possible.





Courtship is the main purpose of the Cendrawasih's gaudy appearance. The female outnumber the males, so the males must compete with each other to win favor of a female when she is ready to mate. The Regianna especially is known for his overly energetic courtship dance. During these displays, vocalizations of seemingly extra-terrestrial origin play an equally important role as the bird's glamorous plumage.

These displays are performed at so-called 'leks', carefully chosen sites in the forest where males gather to attract potential suitors. In contrast to the males, females are generally dull colored, especially in polygamous species like the true birds of paradise (*paradise*). Not all species go to such extremes in attracting a mate: the two species of Paradigalla, for example in which male and female are similar in appearance, are usually monogamous, with each male mating with just a single female.

Cendrawasih are primarily fruit eaters, but they will also eat berries, leaves and small animals such as lizard and frogs. Their flight is slow and ponderous, contrary to their graceful appearance and they stay in the same area all year, not following any sort of migration pattern.

The beauty of Cendrawasih are means gift and curse. Because they have such rare and beautiful plumage, Birds of paradise have been hunted for centuries and their feathers have been used for decorations and their feathers have been used for decoration and their supposed mystical properties. They are now listed as endangered therefore trapping and export are illegal. But unfortunately until now, all species of bird paradise are still being traded illegally on the black market.

Where to find the Birds of Paradise

Cendrawasih are endemic birds in Papua. But if you wish to find this bird easily just come to Taman Burung dan Taman Anggrek (Bird Park and Orchid Park) in Biak Papua. This is nature conservation for several flora and fauna in Biak, Papua. To reach Taman Burung and Taman Anggrek Biak is easy. The first thing to do is to get to Biak and Garuda Indonesia, the national carrier, has seven flights a week to Biak from Jakarta. Once in Biak, it is no problem to rent a car or taking the public transportation such as bus and taxi to the Bird Park and Orchid





Park that is located on the south part of the Island. Our advice is to visit this nature conservation in the morning because the nature conservation closes at noon. This nature conservation opens at 07.30 am and closes at 14.00 pm.

Hornbill



Hornbill--courtesy of iStockphoto

It is the massive and unique bills of Hornbills that made this bird acknowledged as the great birds and spiritual symbol for several tribes in Indonesia. This distinguishing features of Hornbills is legendary, and often adorned by hollow casques. In some species the bill has wrinkles that indicate its age. Therefore in some eastern Indonesian languages and Dutch language, this bird is also known as the year bird.

The other fascinating characteristics of hornbill are the coquettish eyelashes and lack of under wing coverts, which cause a whooshing sound when the wing is flapped. Hornbills are

known as the wary bird because they find them self in the conformity in the least disturbance area. Some of the species move around in raucous groups, whereas others are generally seen in pairs. The Wreathed Horbill (*Aceros Undulatus*) flies in pairs or flocks when they are seeking for food.

The most interesting part of Hornbill is the breeding behavior of this bird. The female isolate herself inside a tree hole covered with cement (mixture of dung, food remains and wood dust). A narrow slit is the only open part of this isolation place. Every day the food is passed through the narrow slit by her faithful mate. She locks herself up to four months to raise her clutch of one into three chicks.





The great bird: Hornbills are commonly found in the western part of Indonesia. The Rhinoceros Hornbill (*Buceros Rihonoceros*) is a large black and white hornbill found throughout most parts of Sumatera, Java and Borneo. The Wrinkled Hornbill (*Acerus Corrugatus*) can be found in Sumatera and Borneo. However, there are four species of Hornbills that can be found in the eastern part of Indonesia. Three of these species are the endemic to their Islands: *Aceros Everitti* on Sumba Island, *Aceros Cassidix* and *Penelopides Exarhatus* on Sulawesi.

Because of its magnificent appearance and size, Hornbills become sacred symbol for several tribes in Indonesia. In Kalimantan and some parts of Sumatera, Hornbills are draws in the motifs in several sacred things. Batak Simalungun use Hornbills motifs on their coffin, roof beams, on house of posts and some other decorations.

The Helmet Hornbills (*Buceros Vigil*) is another example of the hornbills that became sacred symbol. They are known as the 'Forest Devil' because of its rapacious habits, occupying the niche of a large eagle. It is one of two species of hornbills which become provincial symbol. This hornbill that has solid 'ivory' on the front part of the beak has become provincial symbol.

Where to find Hornbills

Tangkoko Batuangas Dua Saudara Nature Reserve

It's getting difficult to find Hornbills because of dwindling population of these fascinating birds. However a nature reserve located in North Sulawesi—Tangkoko Batuangas Dua Saudara Nature Reserve is trying to preserve Red-Knobbed Hornbills and Black Macaques (Small Monkeys).

Tangkoko Batuanags Dua Saudara Nature Resereve is one of Indonesia's most outstanding nature preservation. The reserve is not only home to wildlife and nature trails, but also to beautiful beaches with black volcanic sand and is just an hour drive from the capital of Manado.

If you are hoping to view some of the wildlife, it is advisable to travel in small groups and to be very quite. Let the animals come to you, which will be much easier if you are by stream or under a fruit tree. The wait will be well worth it when you are surrounded by wild tarsiers and comical macaques.





Getting to Tangkoko Batuangas Dua Saudara Nature Reserve

It is fortunately easy to reach Tangkoko Batuangas Dua Saudara Nature Reserve as it located near Manado, one of Indonesia's biggest and best connected cities as it is the capital city of North Sumatera. After arriving in Manado – which is worth a trip in itself – you can take a taxi or rent a car to go to the park. Just as simple as that and this magnificent nature reserve is ready to explore.

Bali Starling, Jalak Bali



Jalak Bali--courtesy of FNPF.org

Bali isn't only well known for its magnificent places but also for its fauna. The Bali Starling is the fauna symbol of this wonderful Bali. This amazing bird also known as *Leucopsar Rothschildi*, or Bali Mynah or Bali Myna or locally known as Jalak Bali. The main characteristic for this amazing bird is the magnificent blue color around the eyes. Both sexes appear similar.

Jalak Bali can only be found in Bali, and it is the only endemic vertebrate species in Bali. The bird was discovered in 1910 and in 1991 was acknowledged as the fauna symbol of Bali.

Unfortunately, Jalak Bali is now critically endangered because of the lack of population around Bali. Being easy to catch, this species needs special care and protection to safeguard its decreasing population. The population of Jalak Bali is decreasing every year due to high demand of this bird in the black market. The government of Indonesia and the local government have tried to stop this illegal market for Jalak Bali, but have found it difficult to enforce rules.





There are two remaining locations on Bali where the birds do exist in the wild: The West Bali National Park and Nusa Penida. There were estimated 350 birds in the West Bali National Park in the 1980s. During 1990s over 400 cage-bred birds were release into the park to increase the numbers. But by 2005, the park authorities estimated the number have fallen to less than 10%.

The second and much larger population of Bali Starling now exists on the island of Nusa Penida, Nusa ceningan and Nusa Lembongan which are 14 km from the southeast coast of Bali. From 2006 Friends of the National Parks Foundation or Yayasan Pecinta Taman Nasional (FNPF)—the Indonesian NGO that operates on the bird preservation—has released 64 birds in Nusa Penida. Accoring to FNPF report, in 2009 the number of Jalak Bali in Nusa Penida has increase more than 100 birds. These birds have spread across Nusa Penida, with small numbers also breeding on Nusa Ceningan and Nusa Lembongan.

In 2011 FNPF captured a photo of Jalak Bali without identification ring on their feet. This means that the chicks are at least the third generation from the original bird that was released.

Where to find Jalak Bali

Bali Barat National Park

The Bali Barat National park was founded in 1941 and aimed to protect the Bali Starling and the last of the wild Banteng, from which most of Balinese cattle descend.

How to reach the Park:

It is best to reach the park from Gilimanuk—the ferry port in Bali. From Gilimanuk you can take a minibus or ojek to Cekik for about three kilometers. Here you will find the PHPA headquarters. Another entry point is from Labuan Lalang. Labuan Lalang lies at the main road to Singaraja, Bali which cuts through the park.





Permits and Guides:

Permits and obligatory guides are available at the PHPA headquarters at Cekik, at PHPA office in Labuan Lalang or at the PHPA office in Denpasar.

Best Time to Visit:

The best time of the year to visit the Bali Barat National Park is at the end of the dry season / start of the wet season, roughly from August to December.

Contact Information:

Office : Kantor Pos Gilimanuk Cekik, 82253, Bali.
Official website : <http://www.wonderfulbali.com/westbali/balibarat.htm>
Phone : +62 365 61060/ +62 365 61173
Email : tnbb@telkom.net

✦ Nusa Penida

Just 14 km and 45 minutes by boat from Bali is the small beautiful unspoilt island of Nusa Penida. The island has stunning beaches, amazing coral reefs, rocky hill terrain, sheer cliffs and traditional Balinese village culture (farming, seaweed production, traditional ikat wearing and many temples)

How to get Nusa Penida

Once you arrive in Bali, you can catch a local boat from Sanur (approx Rp. 70.000 Indonesian Rupiah/ AUD \$ 8) or Padangbai (approx Rp. 25.000/ AUD\$ 3). If you wish to visit FNPF or do volunteer program you should contact FNPF first. They will provide departure time details to pick up at the harbor on Nusa Penida.



Nusa Penida Jalak Bali Bird Sanctuary—courtesy of FNPF





Taman Safari Indonesia

If you wish to see the magnificent various fauna from Indonesia, you should come to Taman Safari Indonesia. It's an amazing modern zoological garden that has primary goal as ex-situ conservation for endemic fauna in Indonesia. Sumatran Tigers, Elephant, Tapir, Orang Utans, Orang Utan of Borneo, various types of Owa, Anoa, Birds of Paradise and others are the successful endemic fauna preserved in Taman Safari Indonesia.



Taman Safari Indonesia provides attractive adventures with the wildlife. In this park you will not only enjoy the beauty of its nature but also interact daily or watch the animals wonder around freely. Visitor can travel in this conservation area using their private car or using provided bus through these amazing wild habitats. Here you can feel the rush of the real interaction with the wildlife. If any troubles occur, the zookeepers are ready to help you at anytime. So it's very challenging and safe!

There are three locations of Taman Safari Indonesia: Taman Safari Indonesia I in Bogor, West Java; Taman Safari Indonesia II in Prigen, Pasuruan, East Java; Taman Safari III (also called Bali Safari and Marine Park) in Serongga, Gianyar,





Bali. But the famous and the oldest one is Taman Safari Indonesia I in Bogor, West Java.

Upon entering Taman Safari Bogor, visitor will notice sensational shady trees and cool weather from Mt. Gunung Gede Pangrango. Taman Safari Bogor is in the location of the buffer zone on National Park Tourism Mount Gunung Gede Pangrango. It will certainly attract you to start your adventure in open nature. After you've passed all the safari environments, you'll reach free-zone where you can park your car and proceed on foot. This free-zone offers a variety of themed rides and scheduled entertainments.

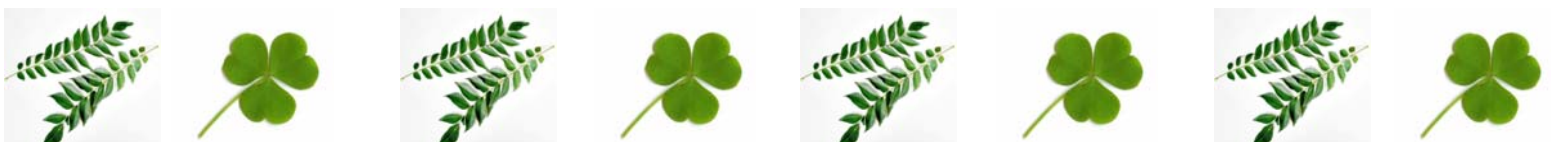


For regular entry, during the day, driving car would be the most convenient because you can decide by yourself when and where to stop to take picture for instance. But if you wish to try something different and more adrenaline rush, you should join the Night Safari. In the Night Safari you can get real experience of attractive interaction with wildlife under the moon and stars. Here we recommend you to try the shuttle bus to explore Taman Safari. There's a guide in each shuttle who is able to explain to you about the wildlife.

Getting to Taman Safari Bogor:

Taman Safari Bogor is just 1.5-2 hours driving from Soekarno-Hatta Airport in Jakarta where taxis can be rented to drop you. It's just also 3 hours driving from Bandung. But if you dare to challenge yourself to use bus transportation, you can also use this to reach this magnificent nature conservation.

Getting to Taman Safari Bogor by bus from Jakarta is quite challenging, first thing first is you need to get yourself in Kampung Rambutan the bus station in Jakarta. Then take a bus to Bogor and transit to Cisarua by Angkot (public transportation) and continue by mini angkot to Taman Safari Bogor.





For more information about Taman Safari Indonesia:

Taman Safari Bogor

Cisarua- Bogor, Indonesia

Phone : +62 251 8250 000

Fax : +62 251 8250 555

Email : pr@tamansafari.com

Official website : www.tamansafari.com

Taman Safari II Prigen

Prigen, Pasuruan, East Java

Official website : www.tamansafari2.com

Email : marketing@tamansafari2.net

Taman Safari III (Bali Safari and Marine Park)

Jln. Bypass Prof. Ida Bagus Mantra km 19.8

(Golden Line of Bali)

Gianyar 80551

Phone : +62 361 950 000

Fax : +62 361 950 555

Official website : www.balisafarimarinepark.com

Email : info@balisafarimarinepark.com





VISIT
INDONESIA
Tourism Officer

wonderful
Indonesia

